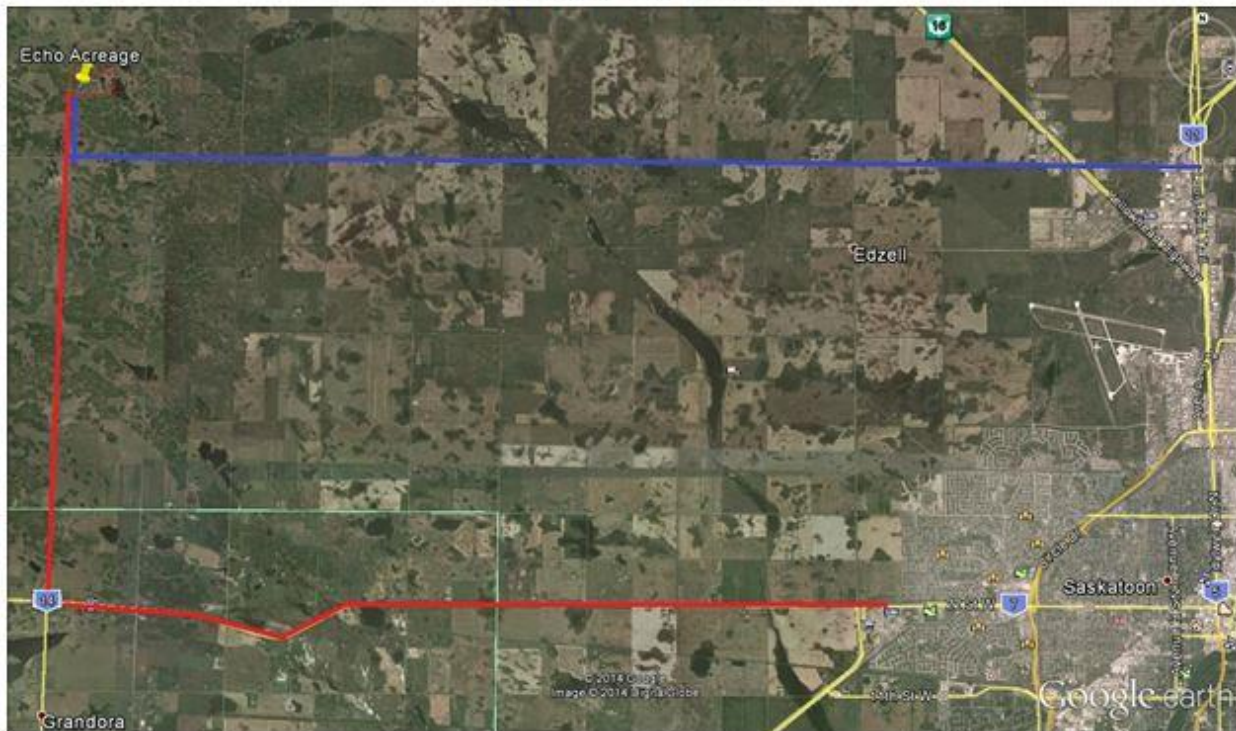


## Map to Echo Acres



**Red line** – less gravel and is usually a better road - take 22nd Street/Hwy 14 west for 15-kms from the Hwy 7 turnoff (Hwy to Rosetown, just past Wal-Mart) to Range Road 3075 (Grandora is to the south), go right/north 9.5 kms to Echo (1.3 kms past last crossroad of Township Road 374 or 71st Street – the blue line)

**Blue line** – take 71st Street/Auction Mart Road/Township Road 374 west for 21 kms from Idywyld/Hwy 11 or 18.8 kms west from Hwy 16 (Yellowhead), turn right/north on Range Road 3075 and go 1.3 kms to Echo. Note, 71st/Auction Mart Road is poorly signed coming from PA and is the first right off the highway (and comes up quick) as you come out from under the over-pass.